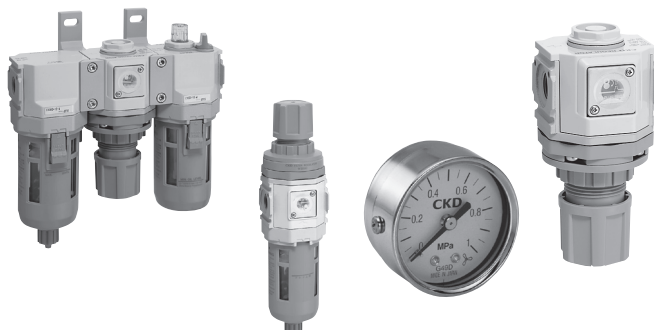


SELEX F.R.L. Modular type

Copper and PTFE free Series

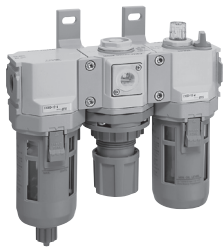
■ Components for air preparation / pressure adjustment / F.R.L. unit



CONTENTS

Product introduction	270
Series variation	250 to 265
⚠ Safety precautions	276
Combination	
● F.R.L. combination (C*000-W-P6)	500
Filter / regulator	
● Filter regulator (W*000-W-P6)	501
● Reverse filter regulator (W*100-W-P6)	502
Air filter	
● Air filter (F*000-W)	503
● Oil mist filter (M*000-W)	504
Regulator	
● Regulator (R*000-W-P6)	505
● Reverse regulator (R*100-W-P6)	506
Lubricator	
● Lubricator (L*000-W)	507
Pressure gauge (G49D-P6/G59D-P6)	508
Bracket, joiner (B-W/J-W)	425
Distributor (D*01-00-W)	426
Piping adaptor (A***-W)	428

Refrigerating type dryer
Desiccant type dryer
High polymer membrane type dryer
Air filter
Auto, drain / others
F.R.L. (Module unit)
F.R.L. (Separate)
Compact F.R.
Precise regulator
F.R.L. (Related products)
Clean F.R.
Electro pneumatic regulator
Air booster
Speed control valve
Silencer
Check valve / others
Joint / tube
Vacuum filter
Vacuum regulator
Suction plate
Magnetic spring buffer
Mechanical pressure SW
Electronic pressure SW
Contact / close contact conf. SW
Air sensor
Pressure SW for coolant
Small flow sensor
Small flow controller
Flow sensor for air
Flow sensor for water
Total air system
Total air system (Gamma)
Ending



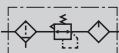
F.R.L. combination: Copper and PTFE free

C1000/C2500/C3000 C4000/C6500/C8000-W-P6 Series

Copper ion prevention treatment

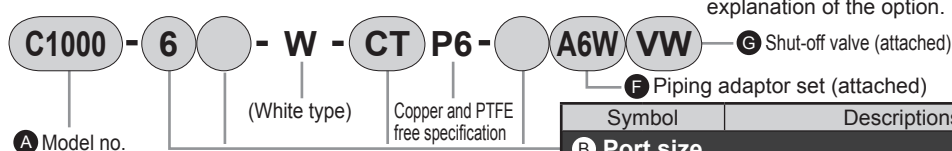
Port size: 1/8 to 1

JIS symbol



RoHS

How to order



*Refer to page 274 for the explanation of the option.

A Model no.					
C1000	C2500	C3000	C4000	C6500	C8000
●	●	●	●	●	●
●	●	●	●	●	●
●	●	●	●	●	●
●	●	●	●	●	●
●	●	●	●	●	●
●	●	●	●	●	●

Symbol	Descriptions						
B Port size							
6	1/8	●	●	●	●	●	●
8	1/4	●	●	●	●	●	●
10	3/8	●	●	●	●	●	●
15	1/2	●	●	●	●	●	●
20	3/4	●	●	●	●	●	●
25	1	●	●	●	●	●	●

C Port thread type		Note 2					
Blank	Rc thread	●	●	●	●	●	●
N	NPT thread	●	●	●	●	●	●
G	G thread	●	●	●	●	●	●

D Option		Note 3					
Drainage	Blank	Filter with manual drain cock, lubricator without manual cock	●	●	●	●	●
	C	Lubricator with manual cock	●	●	●	●	●
Bowl material	Blank	Polycarbonate bowl	●	●	●	●	●
	Z	Nylon bowl	●	●	●	●	●
Element	Blank	5μm	●	●	●	●	●
	Y	0.3μm (submicron)	●	●	●	●	●
Differential pressure detection	Blank	Without differential pressure detection port	●	●	●	●	●
	Q	With differential pressure detection port (Rc1/4)	●	●	●	●	●
Regulator	T	Without pressure gauge, setting 0.05 to 0.85 MPa, relief	●	●	●	●	●
	LT	Without pressure gauge, setting 0.05 to 0.35 MPa, relief	●	●	●	●	●
	NT	Without pressure gauge, setting 0.05 to 0.85 MPa, nonrelief	●	●	●	●	●
	LNT	Without pressure gauge, setting 0.05 to 0.35 MPa, nonrelief	●	●	●	●	●
Flow Direction	Blank	Standard flow (left → right)	●	●	●	●	●
	X1	Reverse flow (right → left)	●	●	●	●	●

E Display unit							
Blank	MPa display, Rc thread	●	●	●	●	●	●
J1	MPa display, NPT, G thread	●	●	●	●	●	●

F Piping adaptor set (attached)		Note 4 page 428					
Blank	Not attached	●	●	●	●	●	●
A6*W	Rc1/8 piping adaptor set	●	●	●	●	●	●
A8*W	Rc1/4 piping adaptor set	●	●	●	●	●	●
A10*W	Rc3/8 piping adaptor set	●	●	●	●	●	●
A15*W	Rc1/2 piping adaptor set	●	●	●	●	●	●
A20*W	Rc3/4 piping adaptor set	●	●	●	●	●	●
A25*W	Rc1 piping adaptor set	●	●	●	●	●	●
A32*W	Rc1 1/4 piping adaptor set	●	●	●	●	●	●

*Adaptor screw type							
Blank	Rc thread	●	●	●	●	●	●
N	NPT thread	●	●	●	●	●	●
G	G thread	●	●	●	●	●	●

G Shut-off valve (attached)		page 408					
Blank	Not attached	●	●	●	●	●	●
VW	Shut-off valve (V3000-W) + joiner set	●	●	●	●	●	●

Note on model no. selection

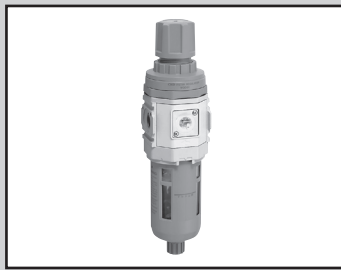
Note 1: Refer to pages 286 to 293 for specifications, dimensions and flow characteristics.

Note 2: When G threads or NPT threads are selected, the IN, OUT, gauge port, and drainage discharge port are the target, including the attachment V.

Note 3: Select options for each drainage, bowl material, element, differential pressure detection, and regulator items. When selecting options for several items, list options in order from the top. Select one of the regulator options.

Note 4: The joiner set is enclosed with the piping adaptor set.

Note 5: Combinations other than those above are used as custom combinations (Pages from 510).



Filter and regulator: Copper and PTFE free

W1000/W3000 W4000/W8000-W-P6 Series

Copper ion prevention treatment

Port size: 1/8 to 1

JIS symbol



RoHS

How to order

W1000 - **6** - **W** - **ZT** **P6** - **A6W** - **G** Bracket (attached)

A Model no. **B** Port size (White type) **C** Port thread type **D** Option **E** Display unit **F** Piping adaptor set (attached)

*Refer to page 274 for the explanation of the option.

Symbol		Descriptions				A Model no.			
B Port size						W1000	W3000	W4000	W8000
6	1/8					●			
8	1/4					●	●	●	
10	3/8						●	●	
15	1/2							●	
20	3/4								●
25	1								●
C Port thread type						Note 2			
Blank	Rc thread					●	●	●	●
N	NPT thread					●	●	●	●
G	G thread					●	●	●	●
D Option						Note 3			
Drainage	Blank	With manual drain cock				●	●	●	●
	Blank	Polycarbonate bowl				●	●	●	●
Bowl material	Z	Nylon bowl				●	●	●	●
	Blank	5μm				●	●	●	●
Element	Y	0.3μm (submicron)					●	●	●
	T	Without pressure gauge, setting 0.05 to 0.85 MPa, relief				●	●	●	●
Regulator	LT	Without pressure gauge, setting 0.05 to 0.35 MPa, relief				●	●	●	●
	NT	Without pressure gauge, setting 0.05 to 0.85 MPa, nonrelief				●	●	●	●
	LNT	Without pressure gauge, setting 0.05 to 0.35 MPa, nonrelief				●	●	●	●
Flow Direction	Blank	Standard flow (left → right)				●	●	●	●
	X1	Reverse flow (right → left)				●	●	●	●
E Display unit									
Blank		MPa display, Rc thread				●	●	●	●
J1		MPa display, NPT, G thread				●	●	●	●
F Piping adaptor set (attached)						Note 4, Note 5, page 428			
Blank		Not attached				●	●	●	●
A6*W		Rc1/8 piping adaptor set				●			
A8*W		Rc1/4 piping adaptor set				●	●	●	
A10*W		Rc3/8 piping adaptor set				●	●	●	
A15*W		Rc1/2 piping adaptor set					●	●	
A20*W		Rc3/4 piping adaptor set						●	●
A25*W		Rc1 piping adaptor set							●
A32*W		Rc1 1/4 piping adaptor set							●
*Adaptor screw type									
Blank		Rc thread				●	●	●	●
N		NPT thread				●	●	●	●
G		G thread				●	●	●	●
G Bracket (attached)						page 425			
Blank		Not attached				●	●	●	●
BW		C type bracket				●	●	●	●
B3W		L type bracket				●	●	●	

⚠ Note on model no. selection

Note 1: Refer to pages 334 to 340 for specifications, dimensions and flow characteristics.

Note 2: When G threads or NPT threads are selected, the IN, OUT, gauge port, and drainage discharge port are the target.

Note 3: Select options per drainage, bowl material, element, and regulator sections. When selecting options for several items, list options in order from the top. Select one of the regulator options.

Note 4: The piping adaptor set and C type bracket cannot be used at the same time.

Note 5: The joiner set is enclosed with the piping adaptor set.

Refrigerating type dryer
Desiccant type dryer
High polymer membrane type dryer

Air filter

Auto, drain / others

F.R.L. (Module unit)

F.R.L. (Separate)

Compact F.R.

Precise regulator

F.R.L. (Related products)

Clean F.R.

Electro pneumatic regulator

Air booster

Speed control valve

Silencer

Check valve / others

Joint / tube

Vacuum filter

Vacuum regulator

Suction plate

Magnetic spring buffer

Mechanical pressure SW

Electronic pressure SW

Contact / close contact cont. SW

Air sensor

Pressure SW for coolant

Small flow sensor

Small flow controller

Flow sensor for air

Flow sensor for water

Total air system

Total air system (Gamma)

Ending

Copper and PTFE free Series

F.R.L unit

Refrigerating type dryer
Desiccant type dryer
High polymer membrane type dryer
Air filter
Auto. drain / others
F.R.L. (Module unit)
F.R.L. (Separate)
Compact F.R.
Precise regulator
F.R.L. (Related products)
Clean F.R.
Electro pneumatic regulator
Air booster
Speed control valve
Silencer
Check valve / others
Joint / tube
Vacuum filter
Vacuum regulator
Suction plate
Magnetic spring buffer
Mechanical pressure SW
Electronic pressure SW
Contact / close contact cont. SW
Air sensor
Pressure SW for coolant
Small flow sensor
Small flow controller
Flow sensor for air
Flow sensor for water
Total air system
Total air system (Gamma)
Ending



Reverse filter/regulator: Copper and PTFE free W1100/W3100 W4100/W8100-W-P6 Series

Copper ion prevention treatment

Port size: 1/8 to 1

JIS symbol

RoHS

How to order

*Refer to page 9 for the explanation of the option.

A Model no. **W1100** - **6** - **W** - **ZT** **P6** - **A6W** **G** Bracket (attached)

B Port size (White type) Copper and PTFE free specification **F** Piping adaptor set (attached)

C Port thread type

D Option

E Display unit

Symbol		Descriptions	A Model no.			
			W1100	W3100	W4100	W8100
B Port size						
6	1/8		●			
8	1/4		●	●	●	
10	3/8			●	●	
15	1/2				●	
20	3/4					●
25	1					●
C Port thread type						
Blank	Rc thread		●	●	●	●
N	NPT thread		●	●	●	●
G	G thread		●	●	●	●
D Option						
Drainage	Blank	With manual drain cock	●	●	●	●
Bowl material	Blank	Polycarbonate bowl	●	●	●	●
	Z	Nylon bowl	●	●	●	●
Element	Blank	5μm	●	●	●	●
	Y	0.3μm (submicron)		●	●	●
Regulator	T	Without pressure gauge, setting 0.05 to 0.85 MPa, relief	●	●	●	●
	TL	Without pressure gauge, setting 0.05 to 0.35 MPa, relief	●	●	●	●
	NT	Without pressure gauge, setting 0.05 to 0.85 MPa, nonrelief	●	●	●	●
	LNT	Without pressure gauge, setting 0.05 to 0.35 MPa, nonrelief	●	●	●	●
Flow Direction	Blank	Standard flow (left → right)	●	●	●	●
	X1	Reverse flow (right → left)	●	●	●	●
E Display unit						
Blank	MPa display, Rc thread		●	●	●	●
J1	MPa display, NPT, G thread		●	●	●	●
F Piping adaptor set (attached)						
Blank	Not attached		●	●	●	●
A6*W	Rc1/8 piping adaptor set		●			
A8*W	Rc1/4 piping adaptor set		●	●	●	
A10*W	Rc3/8 piping adaptor set		●	●	●	
A15*W	Rc1/2 piping adaptor set			●	●	
A20*W	Rc3/4 piping adaptor set				●	●
A25*W	Rc1 piping adaptor set					●
A32*W	Rc1 1/4 piping adaptor set					●
*Adaptor screw type						
Blank	Rc thread		●	●	●	●
N	NPT thread		●	●	●	●
G	G thread		●	●	●	●
G Bracket (attached)						
Blank	Not attached		●	●	●	●
BW	C type bracket		●	●	●	●
B3W	L type bracket		●	●	●	

Note on model no. selection

Note 1: Refer to pages 342 to 349 for specifications, dimensions and flow characteristics.

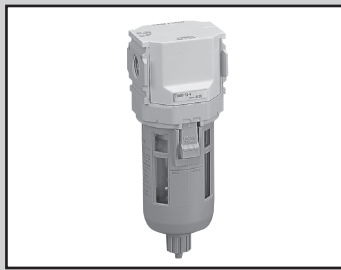
Note 2: When G threads or NPT threads are selected, the IN, OUT, gauge port, and drainage discharge port are the target.

Note 3: Select options per drainage, bowl material, element, and regulator sections. When selecting options for several items, list options in order from the top. Select one of the regulator options.

Note 4: Positions of a check valve and pressure gauge can not be changed. If the IN and OUT direction must be reversed, indicate "X1" at the end of the option field.

Note 5: The piping adaptor set and C type bracket cannot be used at the same time.

Note 6: The joiner set is enclosed with the piping adaptor set.



Air filter: Copper and PTFE free

F1000/F3000 F4000/F6000/F8000-W Series

Copper ion prevention treatment

Copper and PTFE free as standard

Port size: 1/8 to 1

JIS symbol

RoHS

How to order

A Model no. **F1000** - **B** Port size **6** - **C** Port thread type **W** - **D** Option **Z** - **E** Display unit **A6W** - **F** Piping adaptor set (attached)

(White type)

G Bracket (attached)

*Refer to page 274 for the explanation of the option.

Symbol		Descriptions								
B Port size										
6	1/8			●						
8	1/4			●	●	●				
10	3/8				●	●				
15	1/2					●				
20	3/4						●	●		
25	1						●	●		
C Port thread type										Note 2
Blank	Rc thread			●	●	●	●	●		
N	NPT thread			●	●	●	●	●		
G	G thread			●	●	●	●	●		
D Option										Note 3
Drainage	Blank	With manual drain cock		●	●	●	●	●		
Bowl material	Blank	Polycarbonate bowl		●	●	●	●	●		
	Z	Nylon bowl		●	●	●	●	●		
Element	Blank	5μm		●	●	●	●	●		
	Y	0.3μm (submicron)			●	●	●	●		
Differential pressure detection	Blank	Without differential pressure detection port		●	●	●	●	●		
	Q	With differential pressure detection port (Rc1/4)						●	●	
Flow Direction	Blank	Standard flow (left → right)		●	●	●	●	●		
	X1	Reverse flow (right → left)		●	●	●	●	●		
E Display unit										
Blank	MPa display, Rc thread			●	●	●	●	●		
J1	MPa display, NPT/G thread			●	●	●	●	●		
F Piping adaptor set (attached)										Note 4, Note 5 page 428
Blank	Not attached			●	●	●	●	●		
A6*W	Rc1/8 piping adaptor set			●						
A8*W	Rc1/4 piping adaptor set			●	●	●				
A10*W	Rc3/8 piping adaptor set			●	●	●				
A15*W	Rc1/2 piping adaptor set				●	●				
A20*W	Rc3/4 piping adaptor set					●	●	●		
A25*W	Rc1 piping adaptor set						●	●		
A32*W	Rc1 1/4 piping adaptor set						●	●		
*Adaptor screw type										
Blank	Rc thread			●	●	●	●	●		
N	NPT thread			●	●	●	●	●		
G	G thread			●	●	●	●	●		
G Bracket (attached)										page 425
Blank	Not attached			●	●	●	●	●		
BW	C type bracket			●	●	●	●	●		

⚠ Note on model no. selection

Note 1: Refer to pages 350 to 359 for specifications, dimensions and flow characteristics.

Note 2: When G threads or NPT threads are selected, the IN, OUT, and drainage discharge port (metal bowl automatic drain) are the target.

Note 3: Select options for each drainage, bowl material and element. When selecting options for several items, list options in order from the top.

Note 4: The piping adaptor set and C type bracket can not be used together.

Note 5: The joiner set is enclosed with the piping adaptor set.

Refrigerating type dryer
Desiccant type dryer
High polymer membrane type dryer

Air filter

Auto, drain / others

F.R.L. (Module unit)

F.R.L. (Separate)

Compact F.R.

Precise regulator

F.R.L. (Related products)

Clean F.R.

Electro pneumatic regulator

Air booster

Speed control valve

Silencer

Check valve / others

Joint / tube

Vacuum filter

Vacuum regulator

Suction plate

Magnetic spring buffer

Mechanical pressure SW

Electronic pressure SW

Contact / close contact cont. SW

Air sensor

Pressure SW for coolant

Small flow sensor

Small flow controller

Flow sensor for air

Flow sensor for water

Total air system

Total air system (Gamma)

Ending

Copper and PTFE free Series
F.R.L unit



Oil mist filter: copper and PTFE free

M1000/M3000 M4000/M6000/M8000-W Series

Copper ion prevention treatment

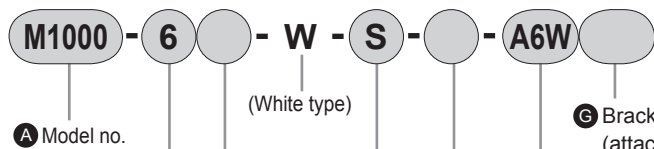
Copper and PTFE free as standard

Port size: 1/8 to 1

JIS symbol

RoHS

How to order



*Refer to page 274 for the explanation of the option.

B Port size

C Port thread type

D Option

E Display unit

F Piping adaptor set (attached)

Symbol		Descriptions		A Model no.				
B Port size				M1000	M3000	M4000	M6000	M8000
6	1/8			●				
8	1/4			●	●	●		
10	3/8				●	●		
15	1/2					●		
20	3/4						●	●
25	1						●	●
C Port thread type				Note 2				
Blank	Rc thread			●	●	●	●	●
N	NPT thread			●	●	●	●	●
G	G thread			●	●	●	●	●
D Option				Note 3				
Drainage	Blank	With manual drain cock		●	●	●	●	●
Bowl material	Blank	Polycarbonate bowl		●	●	●	●	●
	Z	Nylon bowl		●	●	●	●	●
Differential pressure detection	Blank	Without differential pressure detection port		●	●	●	●	●
	Q	With differential pressure detection port (Rc1/4)					●	●
Flow Direction	Blank	Standard flow (left → right)		●	●	●	●	●
	X1	Reverse flow (right → left)		●	●	●	●	●
E Display unit								
Blank	MPa display, Rc thread			●	●	●	●	●
J1	MPa display, NPT/G thread			●	●	●	●	●
F Piping adaptor set (attached)				Note 4, Note 5 page 428				
Blank	Not attached			●	●	●	●	●
A6*W	Rc1/8 piping adaptor set			●				
A8*W	Rc1/4 piping adaptor set			●	●	●		
A10*W	Rc3/8 piping adaptor set			●	●	●		
A15*W	Rc1/2 piping adaptor set				●	●		
A20*W	Rc3/4 piping adaptor set					●	●	●
A25*W	Rc1 piping adaptor set						●	●
A32*W	Rc1 1/4 piping adaptor set						●	●
*Adaptor screw type								
Blank	Rc thread			●	●	●	●	●
N	NPT thread			●	●	●	●	●
G	G thread			●	●	●	●	●
G Bracket (attached)				page 425				
Blank	Not attached			●	●	●	●	●
BW	C type bracket			●	●	●	●	●

Note on model no. selection

- Note 1: Refer to pages 360 to 367 for specifications, dimensions and flow characteristics.
- Note 2: When G threads or NPT threads are selected, the IN, OUT, and drainage discharge port are the target.
- Note 3: Select options for each drainage, bowl material and differential pressure detection.
When selecting options for several items, list options in order from the top.
- Note 4: The piping adaptor set and C type bracket can not be used together.
- Note 5: The joiner set is enclosed with the piping adaptor set.



Regulator: Copper and PTFE free

R1000/R2000/R3000 R4000/R6000/R8000-W-P6 Series

Copper ion prevention treatment

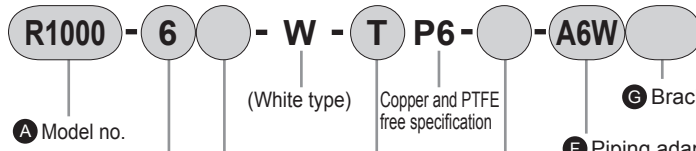
Port size: 1/8 to 1

JIS symbol



RoHS

How to order



*Refer to page 274 for the explanation of the option.

		A Model no.					
		R1000	R2000	R3000	R4000	R6000	R8000
B Port size							
6	1/8	●					
8	1/4	●	●	●	●		
10	3/8		●	●	●		
15	1/2				●		
20	3/4					●	●
25	1					●	●
C Port thread type		Note 2					
Blank	Rc thread	●	●	●	●	●	●
N	NPT thread	●	●	●	●	●	●
G	G thread	●	●	●	●	●	●
D Option		Note 3					
Regulator	T	Without pressure gauge, setting 0.05 to 0.85 MPa, relief	●	●	●	●	●
	LT	Without pressure gauge, setting 0.05 to 0.35 MPa, relief	●	●	●	●	●
	NT	Without pressure gauge, setting 0.05 to 0.85 MPa, nonrelief	●	●	●	●	●
	LNT	Without pressure gauge, setting 0.05 to 0.35 MPa, nonrelief	●	●	●	●	●
Flow Direction	Blank	Standard flow (left → right)	●	●	●	●	●
	X1	Reverse flow (right → left)	●	●	●	●	●
E Display unit							
Blank	MPa display, Rc thread	●	●	●	●	●	●
J1	MPa display, NPT/G thread	●	●	●	●	●	●
F Piping adaptor set (attached)		Note 4, Note 5 page 428					
Blank	Not attached	●	●	●	●	●	●
A6*W	Rc1/8 piping adaptor set	●					
A8*W	Rc1/4 piping adaptor set	●	●	●	●		
A10*W	Rc3/8 piping adaptor set	●	●	●	●		
A15*W	Rc1/2 piping adaptor set		●	●	●		
A20*W	Rc3/4 piping adaptor set				●	●	●
A25*W	Rc1 piping adaptor set						●
A32*W	Rc1 1/4 piping adaptor set						●
*Adaptor screw type							
Blank	Rc thread	●	●	●	●	●	●
N	NPT thread	●	●	●	●	●	●
G	G thread	●	●	●	●	●	●
G Bracket (attached)		page 425					
Blank	Not attached	●	●	●	●	●	●
BW	C type bracket	●	●	●	●	●	●
B3W	L type bracket	●	●	●	●		
B4W	B type bracket		●				

Note on model no. selection

Note 1: Refer to pages 378 to 385 for specifications, dimensions and flow characteristics.

Note 2: When G threads or NPT threads are selected, the IN, OUT and gauge port are the target.

Note 3: Select any one of the option.

Note 4: The piping adaptor set and C type bracket cannot be used at the same time.

Note 5: The joiner set is enclosed with the piping adaptor set.

Refrigerating type dryer
Desiccant type dryer
High polymer membrane type dryer
Air filter
Auto, drain / others
F.R.L. (Module unit)
F.R.L. (Separate)
Compact F.R.
Precise regulator
F.R.L. (Related products)
Clean F.R.
Electro pneumatic regulator
Air booster
Speed control valve
Silencer
Check valve / others
Joint / tube
Vacuum filter
Vacuum regulator
Suction plate
Magnetic spring buffer
Mechanical pressure SW
Electronic pressure SW
Contact / close contact cont. SW
Air sensor
Pressure SW for coolant
Small flow sensor
Small flow controller
Flow sensor for air
Flow sensor for water
Total air system
Total air system (Gamma)
Ending

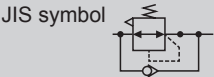
Copper and PTFE free Series
F.R.L unit

Refrigerating type dryer
Desiccant type dryer
High polymer membrane type dryer
Air filter
Auto. drain / others
F.R.L. (Module unit)
F.R.L. (Separate)
Compact F.R.
Precise regulator
F.R.L. (Related products)
Clean F.R.
Electro pneumatic regulator
Air booster
Speed control valve
Silencer
Check valve / others
Joint / tube
Vacuum filter
Vacuum regulator
Suction plate
Magnetic spring buffer
Mechanical pressure SW
Electronic pressure SW
Contact / close contact cont. SW
Air sensor
Pressure SW for coolant
Small flow sensor
Small flow controller
Flow sensor for air
Flow sensor for water
Total air system
Total air system (Gamma)
Ending



Reverse regulator: Copper and PTFE free
**R1100/R2100/R3100
R4100/R6100/R8100 -W-P6 Series**

Copper ion prevention treatment
Port size: 1/8 to 1



RoHS

How to order

R1100 - 6 - W - T P6 - A6

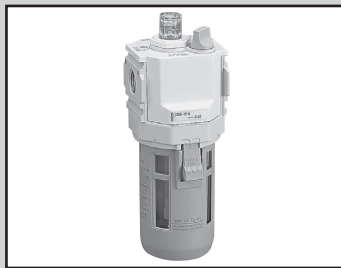
A Model no. (White type) Copper and PTFE free specification **G** Bracket (attached)

F Piping adaptor set (attached)

*Refer to page 274 for the explanation of the option.

Symbol		Descriptions					
B Port size		A Model no.					
6		R1100	R2100	R3100	R4100	R6100	R8100
1/8		●					
1/4		●	●	●	●		
3/8			●	●	●		
1/2					●		
3/4						●	●
1						●	●
C Port thread type		Note 2					
Blank	Rc thread	●	●	●	●	●	●
N	NPT thread	●	●	●	●	●	●
G	G thread	●	●	●	●	●	●
D Option		Note 3, Note 4					
Regulator	T	Without pressure gauge, setting 0.05 to 0.85 MPa, relief	●	●	●	●	●
	TL	Without pressure gauge, setting 0.05 to 0.35 MPa, relief	●	●	●	●	●
	NT	Without pressure gauge, setting 0.05 to 0.85 MPa, nonrelief	●	●	●	●	●
	LNT	Without pressure gauge, setting 0.05 to 0.35 MPa, nonrelief	●	●	●	●	●
Flow Direction	Blank	Standard flow (left → right)	●	●	●	●	●
	X1	Reverse flow (right → left)	●	●	●	●	●
E Display unit							
Blank	MPa display, Rc thread	●	●	●	●	●	●
J1	MPa display, NPT/G thread	●	●	●	●	●	●
F Piping adaptor set (attached)		Note 5, Note 6 page 428					
Blank	Not attached	●	●	●	●	●	●
A6*W	Rc1/8 piping adaptor set	●					
A8*W	Rc1/4 piping adaptor set	●	●	●	●		
A10*W	Rc3/8 piping adaptor set	●	●	●	●		
A15*W	Rc1/2 piping adaptor set		●	●	●		
A20*W	Rc3/4 piping adaptor set				●	●	●
A25*W	Rc1 piping adaptor set						●
A32*W	Rc1 1/4 piping adaptor set						●
*Adaptor screw type							
Blank	Rc thread	●	●	●	●	●	●
N	NPT thread	●	●	●	●	●	●
G	G thread	●	●	●	●	●	●
G Bracket (attached)		page 425					
Blank	Not attached	●	●	●	●	●	●
BW	C type bracket	●	●	●	●	●	●
B3W	L type bracket	●	●	●	●	●	
B6W	B type bracket		●				

- Note on model no. selection**
- Note 1:Refer to pages 386 to 393 for specifications, dimensions and flow characteristics.
- Note 2:When G threads or NPT threads are selected, the IN, OUT and gauge port are the target.
- Note 3:Select any one of the option.
- Note 4:Positions of a check valve and pressure gauge can not be changed. If the IN and OUT direction must be reversed, indicate "X1" at the end of the option field.
- Note 5:The piping adaptor set and C type bracket cannot be used at the same time.
- Note 6:The joiner set is enclosed with the piping adaptor set.



Lubricator: Copper and PTFE free

L1000/L3000 L4000/L8000-W Series

Copper ion prevention treatment

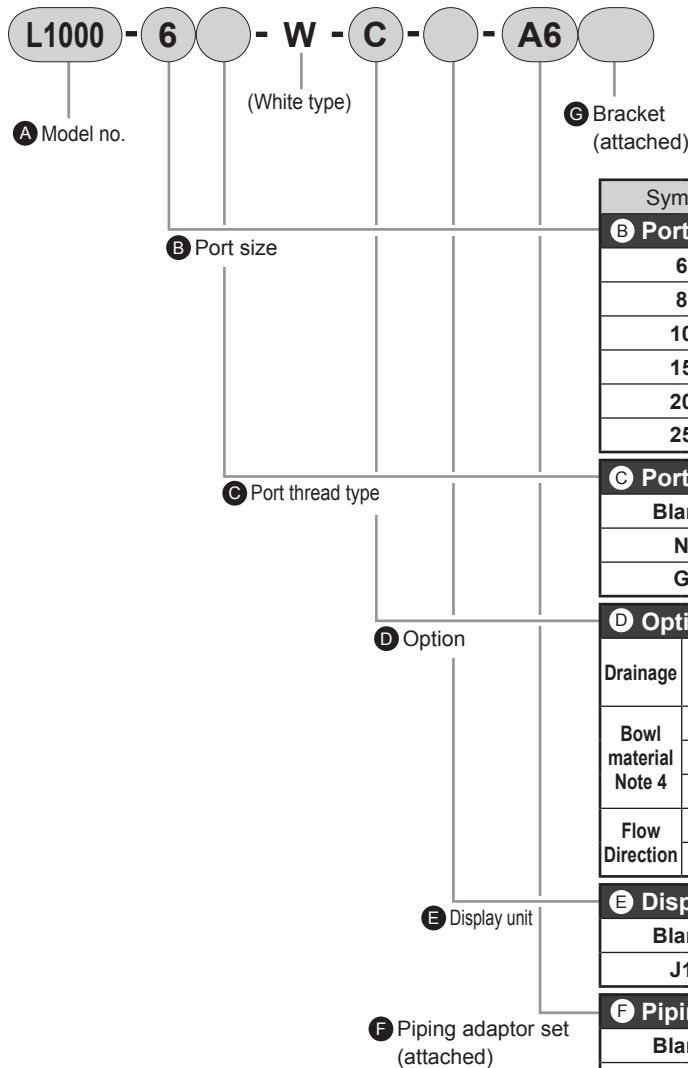
Copper and PTFE free as standard

Port size: 1/8 to 1

JIS symbol

RoHS

How to order



*Refer to page 274 for the explanation of the option.

Symbol		Descriptions			
B Port size					
6	1/8				
8	1/4				
10	3/8				
15	1/2				
20	3/4				
25	1				
C Port thread type		Note 2			
Blank	Rc thread				
N	NPT thread				
G	G thread				
D Option		Note 3			
Drainage	Blank	Without manual cock			
Bowl material Note 4	Blank	Polycarbonate bowl			
	Z	Nylon bowl			
	M	Metal bowl			
Flow Direction	Blank	Standard flow (left → right)			
	X1	Reverse flow (right → left)			
E Display unit					
Blank	MPa display, Rc thread				
J1	MPa display, NPT, G thread				
F Piping adaptor set (attached)		Note 5, Note 6 page 428			
Blank	Not attached				
A6*W	Rc1/8 piping adaptor set				
A8*W	Rc1/4 piping adaptor set				
A10*W	Rc3/8 piping adaptor set				
A15*W	Rc1/2 piping adaptor set				
A20*W	Rc3/4 piping adaptor set				
A25*W	Rc1 piping adaptor set				
A32*W	Rc1 1/4 piping adaptor set				
*Adaptor screw type					
Blank	Rc thread				
N	NPT thread				
G	G thread				
G Bracket (attached)		page 425			
Blank	Not attached				
BW	C type bracket				

Note on model no. selection

- Note 1: Refer to pages 394 to 401 for specifications, dimensions and flow characteristics.
- Note 2: When G threads or NPT threads are selected, the IN and OUT are the target.
- Note 3: Select options for each drainage and bowl material. When selecting options for several items, list options in order from the top.
- Note 4: The side dome's material will change to polyacetal resin when the nylon bowl or metal bowl is selected.
- Note 5: The piping adaptor set and C type bracket cannot be used at the same time.
- Note 6: The joiner set is enclosed with the piping adaptor set.

Refrigerating type dryer
Desiccant type dryer
High polymer membrane type dryer
Air filter
Auto, drain / others
F.R.L. (Module unit)
F.R.L. (Separate)
Compact F.R.
Precise regulator
F.R.L. (Related products)
Clean F.R.
Electro pneumatic regulator
Air booster
Speed control valve
Silencer
Check valve / others
Joint / tube
Vacuum filter
Vacuum regulator
Suction plate
Magnetic spring buffer
Mechanical pressure SW
Electronic pressure SW
Contact / close contact cont. SW
Air sensor
Pressure SW for coolant
Small flow sensor
Small flow controller
Flow sensor for air
Flow sensor for water
Total air system
Total air system (Gamma)
Ending

Copper and PTFE free Series
F.R.L. unit

Refrigerating type dryer
Desiccant type dryer
High polymer membrane type dryer
Air filter
Auto. drain / others
F.R.L. (Module unit)
F.R.L. (Separate)
Compact F.R.
Precise regulator
F.R.L. (Related products)
Clean F.R.
Electro pneumatic regulator
Air booster
Speed control valve
Silencer
Check valve / others
Joint / tube
Vacuum filter
Vacuum regulator
Suction plate
Magnetic spring buffer
Mechanical pressure SW
Electronic pressure SW
Contact / close contact cont. SW
Air sensor
Pressure SW for coolant
Small flow sensor
Small flow controller
Flow sensor for air
Flow sensor for water
Total air system
Total air system (Gamma)
Ending



Other component: Copper and PTFE free
 Pressure gauge Shut-off valve Exhaust cleaner

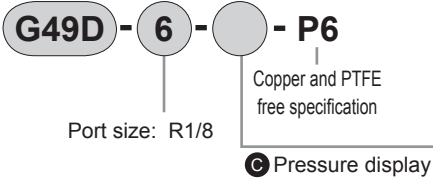
G49D-P6 V3000-W FA*31 Series

G59D-P6 V3010-W V6010-W

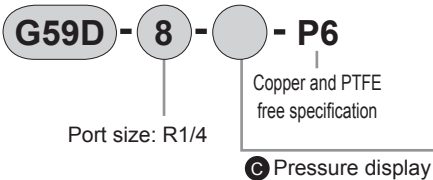


How to order

● Pressure gauge



Symbol	Descriptions
Ⓒ Pressure display (MPa) Note 1	
P02	0 to 0.2MPa
P04	0 to 0.4MPa
P10	0 to 1.0MPa



Symbol	Descriptions
Ⓒ Pressure display (MPa) Note 1	
P02	0 to 0.2MPa
P04	0 to 0.4MPa
P10	0 to 1.0MPa
P20	0 to 2.0MPa

⚠ Note on model no. selection

Note 1: Refer to page 664 for dimensions.

Other components

- Shut-off valve
 ·V3000-W (page 408)
 ·V3010-W/V6010-W (page 411)
 * The above devices are standard parts, and used with PTFE free specifications.
- Exhaust cleaner
 ·FA*31 (page 244)