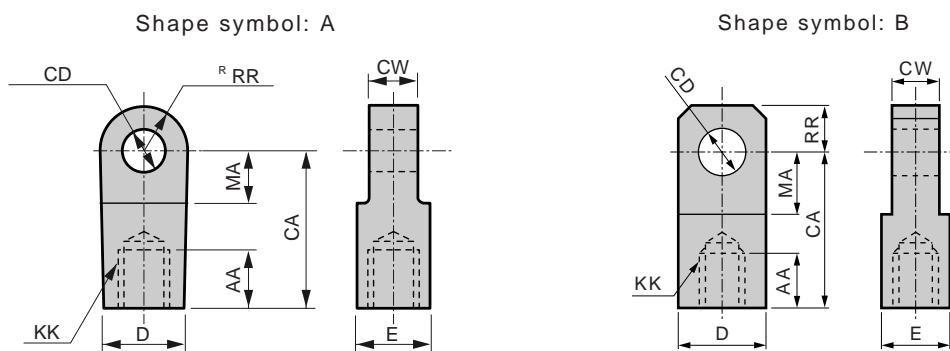


Rod eye/clevis dimension list

Rod eye (per series)



Model	Shape symbol	Model no.	Applicable bore size (ϕ)	AA	CA	CD	CW	D	E	KK	MA	RR
CMK2	B	M1-I-20	20	14	30	10 $\begin{smallmatrix} +0.058 \\ 0 \end{smallmatrix}$	8 $\begin{smallmatrix} -0.1 \\ -0.2 \end{smallmatrix}$	19	19	M8×1.0	13	10
		M1-I-30	25,32	16	36	12 $\begin{smallmatrix} +0.070 \\ 0 \end{smallmatrix}$	10 $\begin{smallmatrix} -0.1 \\ -0.2 \end{smallmatrix}$	25	19	M10×1.25	16	12
		M1-I-40	40	16	36	12 $\begin{smallmatrix} +0.070 \\ 0 \end{smallmatrix}$	10 $\begin{smallmatrix} -0.1 \\ -0.2 \end{smallmatrix}$	25	19	M12×1.5	16	12
CMA2	B	M1-I-20	20	14	30	10 $\begin{smallmatrix} +0.058 \\ 0 \end{smallmatrix}$	8 $\begin{smallmatrix} -0.1 \\ -0.2 \end{smallmatrix}$	19	19	M8×1.0	13	10
		M1-I-30	30	16	36	12 $\begin{smallmatrix} +0.070 \\ 0 \end{smallmatrix}$	10 $\begin{smallmatrix} -0.1 \\ -0.2 \end{smallmatrix}$	25	19	M10×1.25	16	12
		M1-I-40	40	16	36	12 $\begin{smallmatrix} +0.070 \\ 0 \end{smallmatrix}$	10 $\begin{smallmatrix} -0.1 \\ -0.2 \end{smallmatrix}$	25	19	M12×1.5	16	12
CKV2	B	M1-I-20	20	14	30	10 $\begin{smallmatrix} +0.058 \\ 0 \end{smallmatrix}$	8 $\begin{smallmatrix} -0.1 \\ -0.2 \end{smallmatrix}$	19	19	M8×1.0	13	10
		M1-I-30	25,32	16	36	12 $\begin{smallmatrix} +0.070 \\ 0 \end{smallmatrix}$	10 $\begin{smallmatrix} -0.1 \\ -0.2 \end{smallmatrix}$	25	19	M10×1.25	16	12
		M1-I-40	40	16	36	12 $\begin{smallmatrix} +0.070 \\ 0 \end{smallmatrix}$	10 $\begin{smallmatrix} -0.1 \\ -0.2 \end{smallmatrix}$	25	19	M12×1.5	16	12
CAV2	B	CAV2-50-I	50	25	50	14 $\begin{smallmatrix} +0.070 \\ 0 \end{smallmatrix}$	20 $\begin{smallmatrix} 0 \\ -0.3 \end{smallmatrix}$	26	26	M16×1.5	20	R15
COV2		CAV2-75-I	75,100	30	65	20 $\begin{smallmatrix} +0.084 \\ 0 \end{smallmatrix}$	28 $\begin{smallmatrix} 0 \\ -0.3 \end{smallmatrix}$	38	35	M22×1.5	28	R22.5
HCA	B	M1-I-20	20	14	30	10 $\begin{smallmatrix} +0.058 \\ 0 \end{smallmatrix}$	8 $\begin{smallmatrix} -0.1 \\ -0.2 \end{smallmatrix}$	19	19	M8×1.0	13	10
		M1-I-30	25,32	16	36	12 $\begin{smallmatrix} +0.070 \\ 0 \end{smallmatrix}$	10 $\begin{smallmatrix} -0.1 \\ -0.2 \end{smallmatrix}$	25	19	M10×1.25	16	12
	A	S1-I-40	40	20	50	12 $\begin{smallmatrix} +0.070 \\ 0 \end{smallmatrix}$	18 $\begin{smallmatrix} -0.1 \\ -0.4 \end{smallmatrix}$	(27)	27	M14×1.5	21	R16
		S1-I-50	50	21	50	12 $\begin{smallmatrix} +0.070 \\ 0 \end{smallmatrix}$	18 $\begin{smallmatrix} -0.1 \\ -0.4 \end{smallmatrix}$	(27)	27	M18×1.5	21	R16
		S1-I-63	63	21	50	14 $\begin{smallmatrix} +0.070 \\ 0 \end{smallmatrix}$	20 $\begin{smallmatrix} -0.1 \\ -0.4 \end{smallmatrix}$	(27)	27	M18×1.5	21	R16
		S1-I-80	80	30	70	20 $\begin{smallmatrix} +0.084 \\ 0 \end{smallmatrix}$	28 $\begin{smallmatrix} -0.1 \\ -0.4 \end{smallmatrix}$	(46)	41	M22×1.5	30	R25
		S1-I-100	100	30	70	20 $\begin{smallmatrix} +0.084 \\ 0 \end{smallmatrix}$	28 $\begin{smallmatrix} -0.1 \\ -0.4 \end{smallmatrix}$	(46)	41	M26×1.5	30	R25
JSG	B	SCG-I-40	40	19	40	10 $\begin{smallmatrix} H10 \end{smallmatrix}$	14 $\begin{smallmatrix} -0.1 \\ -0.3 \end{smallmatrix}$	ϕ 22	ϕ 22	M14×1.5	19	12.5
		SCG-I-50	50, 63	24	50	14 $\begin{smallmatrix} H10 \end{smallmatrix}$	20 $\begin{smallmatrix} -0.1 \\ -0.3 \end{smallmatrix}$	ϕ 28	ϕ 28	M18×1.5	24	16.5
		SCG-I-80	80	26	60	22 $\begin{smallmatrix} H10 \end{smallmatrix}$	30 $\begin{smallmatrix} -0.1 \\ -0.3 \end{smallmatrix}$	ϕ 40	ϕ 40	M22×1.5	34	23.5
		SCG-I-100	100	26	60	22 $\begin{smallmatrix} H10 \end{smallmatrix}$	30 $\begin{smallmatrix} -0.1 \\ -0.3 \end{smallmatrix}$	ϕ 40	ϕ 40	M26×1.5	34	23.5
JSM2	B	M1-I-20	20	14	30	10 $\begin{smallmatrix} +0.058 \\ 0 \end{smallmatrix}$	8 $\begin{smallmatrix} -0.1 \\ -0.2 \end{smallmatrix}$	19	19	M8×1.0	13	10
		M1-I-30	30	16	36	12 $\begin{smallmatrix} +0.070 \\ 0 \end{smallmatrix}$	10 $\begin{smallmatrix} -0.1 \\ -0.2 \end{smallmatrix}$	25	19	M10×1.25	16	12
		M1-I-40	40	16	36	12 $\begin{smallmatrix} +0.070 \\ 0 \end{smallmatrix}$	10 $\begin{smallmatrix} -0.1 \\ -0.2 \end{smallmatrix}$	25	19	M12×1.5	16	12
JSK2	B	M1-I-20	20	14	30	10 $\begin{smallmatrix} +0.070 \\ 0 \end{smallmatrix}$	8 $\begin{smallmatrix} -0.1 \\ -0.2 \end{smallmatrix}$	19	19	M8×1.0	13	10
		M1-I-30	25,32	16	36	12 $\begin{smallmatrix} +0.070 \\ 0 \end{smallmatrix}$	10 $\begin{smallmatrix} -0.1 \\ -0.2 \end{smallmatrix}$	25	19	M10×1.25	16	12
		M1-I-40	40	16	36	12 $\begin{smallmatrix} +0.070 \\ 0 \end{smallmatrix}$	10 $\begin{smallmatrix} -0.1 \\ -0.2 \end{smallmatrix}$	25	19	M12×1.5	16	12
JSC3	A	S1-I-40	40	20	50	12 $\begin{smallmatrix} +0.084 \\ 0 \end{smallmatrix}$	18 $\begin{smallmatrix} -0.1 \\ -0.4 \end{smallmatrix}$	(27)	27	M14×1.5	21	R16
		S1-I-50	50	21	50	12 $\begin{smallmatrix} +0.084 \\ 0 \end{smallmatrix}$	18 $\begin{smallmatrix} -0.1 \\ -0.4 \end{smallmatrix}$	(27)	27	M18×1.5	21	R16
		S1-I-63	63	21	50	14 $\begin{smallmatrix} +0.058 \\ 0 \end{smallmatrix}$	20 $\begin{smallmatrix} -0.1 \\ -0.4 \end{smallmatrix}$	(27)	27	M18×1.5	21	R16
		S1-I-80	80	30	70	20 $\begin{smallmatrix} +0.070 \\ 0 \end{smallmatrix}$	28 $\begin{smallmatrix} -0.1 \\ -0.4 \end{smallmatrix}$	(46)	41	M22×1.5	30	R25
		S1-I-100	100	30	70	20 $\begin{smallmatrix} +0.070 \\ 0 \end{smallmatrix}$	28 $\begin{smallmatrix} -0.1 \\ -0.4 \end{smallmatrix}$	(46)	41	M26×1.5	30	R25
JSC3	B	SCS-125-I	125	50	85	25 $\begin{smallmatrix} +0.084 \\ 0 \end{smallmatrix}$	32 $\begin{smallmatrix} -0.1 \\ -0.4 \end{smallmatrix}$	ϕ 55	ϕ 55	M30×1.5	32	27.5
		SCS-140-I	140	50	90	28 $\begin{smallmatrix} +0.084 \\ 0 \end{smallmatrix}$	36 $\begin{smallmatrix} -0.1 \\ -0.4 \end{smallmatrix}$	ϕ 60	ϕ 60	M30×1.5	35	30

Ending

Rod eye/clevis dimension list

Rod eye (per series)

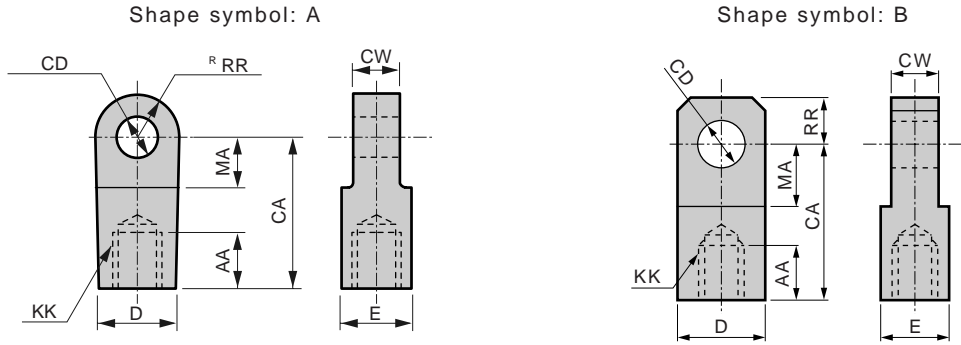
Model	Shape symbol	Model no.	Applicable bore size (φ)	AA	CA	CD	CW	D	E	KK	MA	RR
JSC3	B	SCS-160-I	160	60	105	32 ^{+0.100} ₀	40 ^{-0.1} _{-0.4}	φ70	φ70	M36×1.5	40	35
		SCS-180-I	180	65	115	40 ^{+0.100} ₀	50 ^{-0.1} _{-0.4}	φ85	φ85	M40×1.5	47.5	42.5
SCP*2	B	P2-I-10	10	8	21	3.2 ^{+0.048} ₀	3.1 ⁰ _{-0.1}	12	12	M4	9	7
		P2-I-16	16	8	25	5 ^{+0.048} ₀	6.4 ⁰ _{-0.1}	12	12	M5	14	7
SCA2	A	S1-I-40	40	20	50	12 ^{+0.070} ₀	18 ^{-0.1} _{-0.4}	(27)	27	M14×1.5	21	R16
		S1-I-50	50	21	50	12 ^{+0.070} ₀	18 ^{-0.1} _{-0.4}	(27)	27	M18×1.5	21	R16
		S1-I-63	63	21	50	14 ^{+0.070} ₀	20 ^{-0.1} _{-0.4}	(27)	27	M18×1.5	21	R16
		S1-I-80	80	30	70	20 ^{+0.084} ₀	28 ^{-0.1} _{-0.4}	(46)	41	M22×1.5	30	R25
		S1-I-100	100	30	70	20 ^{+0.084} ₀	28 ^{-0.1} _{-0.4}	(46)	41	M26×1.5	30	R25
SCG	B	SCG-I-32	32	14	30	10 ^{H10}	14 ^{-0.1} _{-0.3}	φ20	φ20	M10×1.25	16	12
		SCG-I-40	40	19	40	10 ^{H10}	14 ^{-0.1} _{-0.3}	φ22	φ22	M14×1.5	19	12.5
		SCG-I-50	50, 63	24	50	14 ^{H10}	20 ^{-0.1} _{-0.3}	φ28	φ28	M18×1.5	24	16.5
		SCG-I-80	80	26	60	22 ^{H10}	30 ^{-0.1} _{-0.3}	φ40	φ40	M22×1.5	34	23.5
		SCG-I-100	100	26	60	22 ^{H10}	30 ^{-0.1} _{-0.3}	φ40	φ40	M26×1.5	34	23.5
SCS	B	SCS-125-I	125	50	85	25 ^{+0.084} ₀	32 ^{-0.1} _{-0.4}	φ55	φ55	M30×1.5	32	27.5
		SCS-140-I	140	50	90	28 ^{+0.084} ₀	36 ^{-0.1} _{-0.4}	φ60	φ60	M30×1.5	35	30
		SCS-160-I	160	60	105	32 ^{+0.100} ₀	40 ^{-0.1} _{-0.4}	φ70	φ70	M36×1.5	40	35
		SCS-180-I	180	65	115	40 ^{+0.100} ₀	50 ^{-0.1} _{-0.4}	φ85	φ85	M40×1.5	47.5	42.5
		SCS-200-I	200	75	125	40 ^{+0.100} ₀	50 ^{-0.1} _{-0.4}	φ85	φ85	M45×1.5	47.5	42.5
		SCS-250-I	250	88	150	50 ^{+0.100} ₀	63 ^{-0.1} _{-0.4}	φ105	φ105	M56×2	57.5	52.5
SCM	B	SCM-I-20	20	8.5	25	8 ^{+0.058} ₀	8 ^{-0.2} _{-0.4}	16	16	M8	11.5	9
		SCM-I-25	25,32	10.5	30	10 ^{+0.058} ₀	10 ^{-0.2} _{-0.4}	20	20	M10×1.25	14	11
	A	SCM-I-40	40	14	30	10 ^{+0.058} ₀	18 ^{-0.3} _{-0.5}	22	22	M14×1.5	14	12
		SCM-I-50	50,63	18	40	14 ^{+0.070} ₀	22 ^{-0.3} _{-0.5}	28	28	M18×1.5	20	16
		SCM-I-80	80	21	50	18 ^{+0.070} ₀	28 ^{-0.3} _{-0.5}	38	38	M22×1.5	27	21
		SCM-I-100	100	21	55	22 ^{+0.084} ₀	32 ^{-0.3} _{-0.5}	44	44	M26×1.5	31	24
SSD	B	P2-I-16	12	8	25	5 ^{+0.048} ₀	6.4 ⁰ _{-0.1}	12	12	M5	14	10
	A	SSD-I-16	16	8	25	5 ^{+0.048} ₀	6.5 ^{-0.1} _{-0.2}	12	12	M6	14	10
	B	SSD-I-20	20	13.5	30	10 ^{+0.058} ₀	8 ^{-0.1} _{-0.2}	19	19	M8	13	10
		M1-I-30	25	16	36	12 ^{+0.070} ₀	10 ^{-0.1} _{-0.2}	25	19	M10×1.25	16	12
	A	SSD-I-32	32	15	36	12 ^{+0.070} ₀	10 ^{-0.1} _{-0.2}	25	19	M14	16	12
		SSD-I-40	40	20	50	12 ^{+0.070} ₀	18 ^{-0.1} _{-0.4}	27	27	M14×1.5	21	16
		SSD-I-50	50	21	50	12 ^{+0.070} ₀	18 ^{-0.1} _{-0.4}	27	27	M18×1.5	21	16
		SSD-I-63	63	21	50	14 ^{+0.070} ₀	20 ^{-0.1} _{-0.4}	(27)	27	M18×1.5	21	R16
		SSD-I-80	80	30	70	20 ^{+0.084} ₀	28 ^{-0.1} _{-0.4}	46	41	M22×1.5	30	25
		SSD-I-100	100	30	70	20 ^{+0.084} ₀	28 ^{-0.1} _{-0.4}	46	41	M26×1.5	30	25
B	SCS-125-I	125,140	50	85	25 ^{+0.084} ₀	32 ^{-0.1} _{-0.4}	55	55	M30×1.5	32	27.5	
	SCS-160-I	160	60	105	32 ^{+0.100} ₀	40 ^{-0.1} _{-0.4}	70	70	M36×1.5	40	35	
ULK	B	M1-I-20	20	14	30	10 ^{+0.058} ₀	8 ^{-0.1} _{-0.2}	19	19	M8×1.0	13	10
		M1-I-30	25,32	16	36	12 ^{+0.070} ₀	10 ^{-0.1} _{-0.2}	25	19	M10×1.25	16	12
		M1-I-40	40	16	36	12 ^{+0.070} ₀	10 ^{-0.1} _{-0.2}	25	19	M12×1.5	16	12

Ending

Rod eye/clevis dimension

Rod eye/clevis dimension list

Rod eye (per thread size)

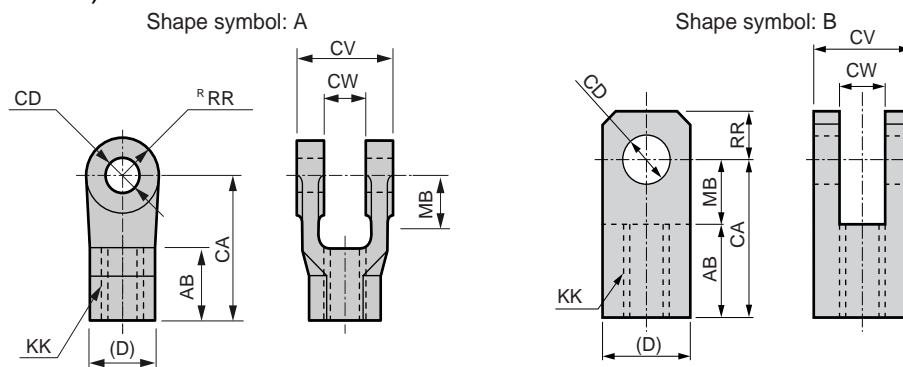


Screw diameter KK	Model no.	Shape symbol	Applicable model	Applicable bore size(φ)	AA	CA	CD	CW	D	E	MA	RR
M4	P2-I-10	B	SCP*2	10	8	21	3.2 ^{+0.048} ₀	3.1 ⁰ _{-0.1}	12	12	9	10
M5	P2-I-16	B	SCP*2	16	8	25	5 ^{+0.048} ₀	6.4 ⁰ _{-0.1}	12	12	14	10
			SSD	12								
M6	SSD-I-16	A	SSD	16	8	25	5 ^{+0.048} ₀	6.5 ^{-0.1} _{-0.2}	12	12	14	10
M8 x 1.0	M1-I-20	B	CKV2, CMA2, CMK2 HCA, JSK2, JSM2 ULK	20	14	30	10 ^{+0.058} ₀	8 ^{-0.1} _{-0.2}	19	19	13	10
			SCM-I-20									
M8	SSD-I-20	B	SSD	20	13.5	30	10 ^{+0.058} ₀	8 ^{-0.1} _{-0.2}	19	19	13	10
	M10 x 1.25	SCG-I-32	B	SCG	32	14	30	10 ^{H10}	14 ^{-0.1} _{-0.3}	φ20	φ20	16
M10 x 1.25	M1-I-30	B	CMA2, CMK2, HCA JSK2, JSM2, ULK, SSD	25, 30, 32	16	36	12 ^{+0.070} ₀	10 ^{-0.1} _{-0.2}	19	19	16	12
	SCM-I-25	B	SCM	25, 32	10.5	30	10 ^{+0.058} ₀	10 ^{-0.2} _{-0.4}	20	20	14	11
M12 x 1.5	M1-I-40	B	CKV2, CMA2, CMK2 JSK2, JSM2, ULK	40	16	36	12 ^{+0.070} ₀	10 ^{-0.1} _{-0.2}	19	19	16	12
M14 x 1.5	SCG-I-40	B	SCG, JSG	40	19	40	10 ^{H10}	14 ^{-0.1} _{-0.3}	φ22	φ22	19	12.5
M14 x 1.5	S1-I-40	A	HCA, JSC3 SCA2, SSD	40	20	50	12 ^{+0.070} ₀	18 ^{-0.1} _{-0.4}	(27)	27	21	R16
	SCM-I-40	A	SCM	40	14	30	10 ^{+0.058} ₀	18 ^{-0.3} _{-0.5}	22	22	14	12
M14	SSD-I-32	B	SSD	32	15	36	12	10 ^{-0.1} _{-0.2}	25	19	16	12
M16 x 1.5	CAV2-50-I	B	CAV2, COV2	50	25	50	14 ^{+0.070} ₀	20 ⁰ _{-0.3}	26	26	20	R15
M18 x 1.5	SCG-I-50	B	SCG, JSG	50, 63	24	50	14 ^{H10}	20 ^{-0.1} _{-0.3}	φ28	φ28	24	16.5
M18 x 1.5	S1-I-50	A	HCA, JSC3, SCA2	50	21	50	12 ^{+0.070} ₀	18 ^{-0.1} _{-0.4}	(27)	27	21	R16
	SSD-I-50		SSD									
	S1-I-63	A	HCA, JSC3, SCA2	63	21	50	14 ^{+0.070} ₀	20 ^{-0.1} _{-0.4}	(27)	27	21	R16
	SSD-I-63		SSD									
SCM-I-50	A	SCM	50, 63	18	40	14 ^{+0.070} ₀	22 ^{-0.3} _{-0.5}	28	28	20	16	
M22 x 1.5	SCG-I-80	B	SCG, JSG	80	26	60	22 ^{H10}	30 ^{-0.1} _{-0.3}	φ40	φ40	34	23.5
M22 x 1.5	CAV2-75-I	B	CAV2, COV2	75, 100	30	65	20 ^{+0.084} ₀	28 ⁰ _{-0.3}	38	35	28	R22.5
	S1-I-80	A	HCA, JSC3, SCA2	80	30	70	20 ^{+0.084} ₀	28 ^{-0.1} _{-0.4}	(46)	41	30	R25
	SSD-I-80		SSD									
	SCM-I-80	A	SCM	80	21	50	18 ^{+0.070} ₀	28 ^{-0.3} _{-0.5}	38	38	27	21
M26 x 1.5	SCG-I-100	B	SCG, JSG	100	26	60	22 ^{H10}	30 ^{-0.1} _{-0.3}	φ40	φ40	34	23.5
M26 x 1.5	S1-I-100	A	HCA, JSC3, SCA2	100	30	70	20 ^{+0.084} ₀	28 ^{-0.1} _{-0.4}	(46)	41	30	R25
	SSD-I-100		SSD									
	SCM-I-100	A	SCM	100	21	55	22 ^{+0.084} ₀	32 ^{-0.3} _{-0.5}	44	44	31	24
M30 x 1.5	SCS-125-I	B	JSC3, SCS	125	50	85	25 ^{+0.084} ₀	32 ^{-0.1} _{-0.4}	φ55	φ55	32	27.5
			SSD	(125, 140)								
M36 x 1.5	SCS-140-I	B	JSC3, SCS	140	50	90	28 ^{+0.084} ₀	36 ^{-0.1} _{-0.4}	φ60	φ60	35	30
M36 x 1.5	SCS-160-I	B	JSC3, SCS, SSD	160	60	105	32 ^{+0.100} ₀	40 ^{-0.1} _{-0.4}	φ70	φ70	40	35
M40 x 1.5	SCS-180-I	B	JSC3, SCS	180	65	115	40 ^{+0.100} ₀	50 ^{-0.1} _{-0.4}	φ85	φ85	47.5	42.5
M45 x 1.5	SCS-200-I	B	SCS	200	75	125	40 ^{+0.100} ₀	50 ^{-0.1} _{-0.4}	φ85	φ85	47.5	42.5
M56 x 2	SCS-250-I	B	SCS	250	88	150	50 ^{+0.100} ₀	63 ^{-0.1} _{-0.4}	φ105	φ105	57.5	52.5

Ending

Rod eye/clevis dimension list

Rod clevis (per series)



Model	Shape symbol	Model no.	Applicable bore size (ϕ)	AB	CA	CW	CD	CV	D	KK	MB	RR
CMK2	B	M1-Y-20	20	17	30	8 ^{+0.3} _{+0.1}	10 ^{+0.058} ₀	19	19	M8×1.0	13	10
		M1-Y-30	25, 32	20	36	10 ^{+0.3} _{+0.1}	12 ^{+0.070} ₀	25	25	M10×1.25	16	12
		M1-Y-40	40	20	36	10 ^{+0.3} _{+0.1}	12 ^{+0.070} ₀	25	25	M12×1.5	16	12
CMA2	B	M1-Y-20	20	17	30	8 ^{+0.3} _{+0.1}	10 ^{+0.058} ₀	19	19	M8×1.0	13	10
		M1-Y-30	30	20	36	10 ^{+0.3} _{+0.1}	12 ^{+0.070} ₀	25	25	M10×1.25	16	12
		M1-Y-40	40	20	36	10 ^{+0.3} _{+0.1}	12 ^{+0.070} ₀	25	25	M12×1.5	16	12
CKV2	B	M1-Y-20	20	17	30	8 ^{+0.3} _{+0.1}	10 ^{+0.058} ₀	19	19	M8×1.0	13	10
		M1-Y-30	25, 32	20	36	10 ^{+0.3} _{+0.1}	12 ^{+0.070} ₀	25	25	M10×1.25	16	12
		M1-Y-40	40	20	36	10 ^{+0.3} _{+0.1}	12 ^{+0.070} ₀	25	25	M12×1.5	16	12
CAV2	A	CAV2-50-Y	50	25	50	20 ^{+0.3} ₀	14 ^{+0.070} ₀	42	(23)	M16×1.5	23	R15
COV2		CAV2-75-Y	75, 100	30	65	28 ^{+0.3} ₀	20 ^{+0.084} ₀	60	(35)	M22×1.5	33	R22.5
HCA	B	M1-Y-20	20	17	30	8 ^{+0.3} _{+0.1}	10 ^{+0.058} ₀	19	19	M8×1.0	13	10
		M1-Y-30	25, 32	20	36	10 ^{+0.3} _{+0.1}	12 ^{+0.070} ₀	25	25	M10×1.25	16	12
	A	S1-Y-40	40	24	50	18 ^{+0.4} _{+0.1}	12 ^{+0.070} ₀	36	(27)	M14×1.5	19	R16
		S1-Y-50	50	24	50	18 ^{+0.4} _{+0.1}	12 ^{+0.070} ₀	36	(27)	M18×1.5	19	R16
		S1-Y-63	63	24	50	20 ^{+0.4} _{+0.1}	14 ^{+0.070} ₀	40	(27)	M18×1.5	19	R16
		S1-Y-80	80	35	70	28 ^{+0.4} _{+0.1}	20 ^{+0.084} ₀	56	(41)	M22×1.5	25	R25
S1-Y-100	100	35	70	28 ^{+0.4} _{+0.1}	20 ^{+0.084} ₀	56	(41)	M26×1.5	25	R25		
JSG	A	SCG-Y-40	40	21	40	14 ^{+0.3} _{+0.1}	10 ^{H10}	28	(22)	M14×1.5	19	11
		SCG-Y-50	50, 63	26	50	20 ^{+0.3} _{+0.1}	14 ^{H10}	40	(28)	M18×1.5	24	14
		SCG-Y-80	80	31	65	30 ^{+0.3} _{+0.1}	22 ^{H10}	60	(40)	M22×1.5	34	20
		SCG-Y-100	100	31	65	30 ^{+0.3} _{+0.1}	22 ^{H10}	60	(40)	M26×1.5	34	20
JSM2	B	M1-Y-20	20	17	30	8 ^{+0.3} _{+0.1}	10 ^{+0.058} ₀	19	19	M8×1.0	13	10
		M1-Y-30	30	20	36	10 ^{+0.3} _{+0.1}	12 ^{+0.070} ₀	25	25	M10×1.25	16	12
		M1-Y-40	40	20	36	10 ^{+0.3} _{+0.1}	12 ^{+0.070} ₀	25	25	M12×1.5	16	12
JSK2	B	M1-Y-20	20	17	30	8 ^{+0.3} _{+0.1}	10 ^{+0.058} ₀	19	19	M8×1.0	13	10
		M1-Y-30	25, 32	20	36	10 ^{+0.3} _{+0.1}	12 ^{+0.070} ₀	25	25	M10×1.25	16	12
		M1-Y-40	40	20	36	10 ^{+0.3} _{+0.1}	12 ^{+0.070} ₀	25	25	M12×1.5	16	12
JSC3	A	S1-Y-40	40	24	50	18 ^{+0.4} _{+0.1}	12 ^{+0.070} ₀	36	(27)	M14×1.5	19	R16
		S1-Y-50	50	24	50	18 ^{+0.4} _{+0.1}	12 ^{+0.070} ₀	36	(27)	M18×1.5	19	R16
		S1-Y-63	63	24	50	20 ^{+0.4} _{+0.1}	14 ^{+0.070} ₀	40	(27)	M18×1.5	19	R16
		S1-Y-80	80	35	70	28 ^{+0.4} _{+0.1}	20 ^{+0.084} ₀	56	(41)	M22×1.5	25	R25
		S1-Y-100	100	35	70	28 ^{+0.4} _{+0.1}	20 ^{+0.084} ₀	56	(41)	M26×1.5	25	R25
JSC3	A	SCS-125-Y	125	50	85	32 ^{+0.4} _{+0.1}	25 ^{+0.084} ₀	64	(46)	M30×1.5	35	R27.5
		SCS-140-Y	140	50	90	36 ^{+0.4} _{+0.1}	28 ^{+0.084} ₀	72	(46)	M30×1.5	40	R30

Ending

Rod eye/clevis dimension list

Rod clevis (per series)

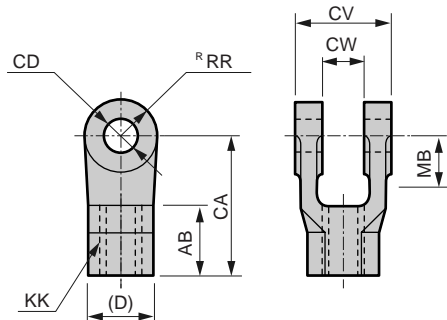
Model	Shape symbol	Model no.	Applicable bore size (ϕ)	AB	CA	CW	CD	CV	D	KK	MB	RR
JSC3	A	SCS-160-Y	160	60	105	40 ^{+0.4} _{+0.1}	32 ^{+0.100} ₀	80	(55)	M36×1.5	45	R35
		SCS-180-Y	180	65	115	50 ^{+0.4} _{+0.1}	40 ^{+0.100} ₀	100	(60)	M40×1.5	50	R42.5
SCP*2	B	P2-Y-10	10	8	21	3.2 ^{+0.2} ₀	3.2 ^{+0.048} ₀	12	12	M4	10	7
		P2-Y-16	16	8	21	6.5 ^{+0.2} ₀	5 ^{+0.048} ₀	12	12	M5	10	7
SCG	A	SCG-Y-32	32	14	30	14 ^{+0.3} _{+0.1}	10 ^{H10}	28	(20)	M10×1.25	16	10
		SCG-Y-40	40	21	40	14 ^{+0.3} _{+0.1}	10 ^{H10}	28	(22)	M14×1.5	19	11
		SCG-Y-50	50, 63	26	50	20 ^{+0.3} _{+0.1}	14 ^{H10}	40	(28)	M18×1.5	24	14
		SCG-Y-80	80	31	65	30 ^{+0.3} _{+0.1}	22 ^{H10}	60	(40)	M22×1.5	34	20
		SCG-Y-100	100	31	65	30 ^{+0.3} _{+0.1}	22 ^{H10}	60	(40)	M26×1.5	34	20
SCA2	A	S1-Y-40	40	24	50	18 ^{+0.4} _{+0.1}	12 ^{+0.070} ₀	36	(27)	M14×1.5	19	R16
		S1-Y-50	50	24	50	18 ^{+0.4} _{+0.1}	12 ^{+0.070} ₀	36	(27)	M18×1.5	19	R16
		S1-Y-63	63	24	50	20 ^{+0.4} _{+0.1}	14 ^{+0.070} ₀	40	(27)	M18×1.5	19	R16
		S1-Y-80	80	35	70	28 ^{+0.4} _{+0.1}	20 ^{+0.084} ₀	56	(41)	M22×1.5	30	R25
		S1-Y-100	100	35	70	28 ^{+0.4} _{+0.1}	20 ^{+0.084} ₀	56	(41)	M26×1.5	30	R25
SCS	A	SCS-125-Y	125	50	85	32 ^{+0.4} _{+0.1}	25 ^{+0.084} ₀	64	(46)	M30×1.5	35	R27.5
		SCS-140-Y	140	50	90	36 ^{+0.4} _{+0.1}	28 ^{+0.084} ₀	72	(46)	M30×1.5	40	R30
		SCS-160-Y	160	60	105	40 ^{+0.4} _{+0.1}	32 ^{+0.100} ₀	80	(55)	M36×1.5	45	R35
		SCS-180-Y	180	65	115	50 ^{+0.4} _{+0.1}	40 ^{+0.100} ₀	100	(60)	M40×1.5	50	R42.5
		SCS-200-Y	200	75	125	50 ^{+0.4} _{+0.1}	40 ^{+0.100} ₀	100	(70)	M45×1.5	50	R42.5
		SCS-250-Y	250	88	150	63 ^{+0.4} _{+0.1}	50 ^{+0.100} ₀	126	(85)	M56×2	62	R52.5
SCM	B	SCM-Y-20	20	13.5	25	8 ^{+0.4} _{+0.2}	8 ^{+0.058} ₀	16	16	M8	11.5	9
		SCM-Y-25	25, 32	16	30	10 ^{+0.4} _{+0.2}	10 ^{+0.058} ₀	20	20	M10×1.25	14	11
	A	SCM-Y-40	40	16	30	18 ^{+0.5} _{+0.3}	10 ^{+0.058} ₀	36	22	M14×1.5	14	12
		SCM-Y-50	50, 63	20	40	22 ^{+0.5} _{+0.3}	14 ^{+0.070} ₀	44	28	M18×1.5	20	16
		SCM-Y-80	80	23	50	28 ^{+0.5} _{+0.3}	18 ^{+0.070} ₀	56	38	M22×1.5	27	21
		SCM-Y-100	100	24	55	32 ^{+0.5} _{+0.3}	22 ^{+0.084} ₀	64	44	M26×1.5	31	24
SSD	B	P2-Y-16	12	8	21	6.5 ^{+0.2} _{+0.1}	5 ^{+0.048} ₀	12	12	M5	10	7
	A	SSD-Y-16	16	11	21	6.5 ^{+0.2} _{+0.1}	5 ^{+0.048} ₀	12	12	M6	10	10
	B	SSD-Y-20	20	17	30	8 ^{+0.3} _{+0.1}	10 ^{+0.058} ₀	19	19	M8	13	10
		M1-Y-30	25	20	36	10 ^{+0.3} _{+0.1}	12 ^{+0.070} ₀	25	25	M10×1.25	16	12
		SSD-Y-32	32	15	36	10 ^{+0.3} _{+0.1}	12	25	25	M14	16	12
	A	SSD-Y-40	40	24	50	18 ^{+0.4} _{+0.1}	12 ^{+0.070} ₀	36	(27)	M14×1.5	19	16
		SSD-Y-50	50	24	50	18 ^{+0.4} _{+0.1}	12 ^{+0.070} ₀	36	(27)	M18×1.5	19	16
		SSD-Y-63	63	24	50	20 ^{+0.4} _{+0.1}	14 ^{+0.070} ₀	40	(27)	M18×1.5	19	R16
		SSD-Y-80	80	35	70	28 ^{+0.4} _{+0.1}	20 ^{+0.084} ₀	56	(41)	M22×1.5	30	25
		SSD-Y-100	100	35	70	28 ^{+0.4} _{+0.1}	20 ^{+0.084} ₀	56	(41)	M26×1.5	30	25
B	SCS-125-Y	125, 140	50	85	32 ^{+0.4} _{+0.1}	25 ^{+0.084} ₀	64	(46)	M30×1.5	35	27.5	
	SCS-160-Y	160	60	105	40 ^{+0.4} _{+0.1}	32 ^{+0.100} ₀	80	(55)	M36×1.5	45	35	
ULK	B	M1-Y-20	20	17	30	8 ^{+0.3} _{+0.1}	10 ^{+0.058} ₀	19	19	M8×1.0	13	10
		M1-Y-30	25, 32	20	36	10 ^{+0.3} _{+0.1}	12 ^{+0.070} ₀	25	25	M10×1.25	16	12
		M1-Y-40	40	20	36	10 ^{+0.3} _{+0.1}	12 ^{+0.070} ₀	25	25	M12×1.5	16	12

Ending

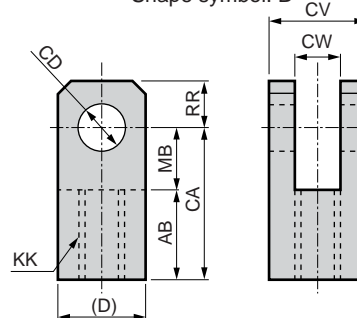
Rod eye/clevis dimension

Rod eye/clevis dimension list

Rod clevis (per thread size) Shape symbol: A



Shape symbol: B



Screw diameter T	Model no.	Shape symbol	Applicable model	Applicable bore size (ϕ)	AB	CA	CW	CD	CV	D	MB	RR
M4	P2-Y-10	B	SCP*2	10	8	21	$3.2^{+0.2}_0$	$3.2^{+0.048}_0$	12	12	10	11
M5	P2-Y-16	B	SCP*2	16	11	21	$6.5^{+0.2}_0$	$5^{+0.048}_0$	12	12	10	11
			SSD	12								
M6	SSD-Y-16	A	SSD	16	11	21	$6.5^{+0.2}_{+0.1}$	5	12	12	10	10
M8 x 1.0	M1-Y-20	B	CKV2, CMA2, CMK2 HCA, JSK2, JSM2 ULK	20	17	30	$8^{+0.3}_{+0.1}$	$10^{+0.058}_0$	19	19	13	10
M8	SCM-Y-20	B	SCM	20	13.5	25	$8^{+0.4}_{+0.2}$	$8^{+0.058}_0$	16	16	11.5	9
	SSD-Y-20	B	SSD	20	17	30	$8^{+0.3}_{+0.1}$	10	19	19	13	10
M10 x 1.25	SCG-Y-32	A	SCG	32	14	30	$14^{+0.3}_{+0.1}$	10^{H10}	28	(20)	16	10
M10 x 1.25	M1-Y-30	B	CKV2, CMA2, CMK2 HCA, JSK2, JSM2 ULK, SSD	25, 30, 32	20	36	$10^{+0.3}_{+0.1}$	$12^{+0.070}_0$	25	25	16	12
	SCM-Y-25	B	SCM	25, 32	16	30	$10^{+0.4}_{+0.2}$	$10^{+0.058}_0$	20	20	14	11
M12 x 1.5	M1-Y-40	B	CKV2, CMA2, CMK2 JSK2, JSM2, ULK	40	20	36	$10^{+0.3}_{+0.1}$	$12^{+0.070}_0$	25	25	16	12
M14 x 1.5	SCG-Y-40	A	SCG, JSG	40	21	40	$14^{+0.3}_{+0.1}$	10^{H10}	28	(22)	19	11
M14 x 1.5	S1-Y-40	A	HCA, JSC3 SCA2, SSD	40	24	50	$18^{+0.4}_{+0.1}$	$12^{+0.070}_0$	36	(27)	19	R16
	SCM-Y-40	A	SCM	40	16	30	$18^{+0.5}_{+0.3}$	$10^{+0.058}_0$	36	22	14	12
M14	SSD-Y-32	B	SSD	32	15	36	$10^{+0.3}_{+0.1}$	12	25	25	16	12
M16 x 1.5	CAV2-50-Y	B	CAV2, COV	50	25	50	$20^{+0.3}_0$	$14^{+0.070}_0$	42	(23)	23	R15
M18 x 1.5	SCG-Y-50	A	SCG, JSG	50, 63	26	50	$20^{+0.3}_{+0.1}$	14^{H10}	40	(28)	24	14
M18 x 1.5	S1-Y-50	A	HCA, JSC3, SCA2	50	24	50	$18^{+0.4}_{+0.1}$	$12^{+0.070}_0$	36	(27)	19	R16
	SSD-Y-50		SSD									
	S1-Y-63	A	HCA, JSC3, SCA2	63	24	50	$20^{+0.4}_{+0.1}$	$14^{+0.070}_0$	40	(27)	19	R16
	SSD-Y-63		SSD									
	SCM-Y-50	A	SCM	50, 63	20	40	$22^{+0.5}_{+0.3}$	$14^{+0.070}_0$	44	28	20	16
M22 x 1.5	SCG-Y-80	A	SCG, JSG	80	31	65	$30^{+0.3}_{+0.1}$	22^{H10}	60	(40)	34	20
M22 x 1.5	CAV2-75-Y	B	CAV2, COV2	75, 100	30	65	$28^{+0.3}_0$	$20^{+0.084}_0$	60	(35)	33	R22.5
	S1-Y-80	A	HCA, JSC3, SCA2	80	35	70	$28^{+0.4}_{+0.1}$	$20^{+0.084}_0$	56	(41)	30	R25
	SSD-Y-80		SSD									
	SCM-Y-80	A	SCM	80	23	50	$28^{+0.5}_{+0.3}$	$18^{+0.070}_0$	56	38	27	21
M26 x 1.5	SCG-Y-100	A	SCG, JSG	100	31	65	$30^{+0.3}_{+0.1}$	22^{H10}	60	(40)	34	20
M26 x 1.5	S1-Y-100	A	HCA, JSC3, SCA2	100	35	70	$28^{+0.4}_{+0.1}$	$20^{+0.084}_0$	56	(41)	30	R25
	SSD-Y-100		SSD									
		SCM-Y-100	A	SCM	100	24	55	$32^{+0.5}_{+0.3}$	$22^{+0.084}_0$	64	44	31
M30 x 1.5	SCS-125-Y	A	JSC3 (large bore size), SCS, SSD	125 (SSD: 125, 140)	50	85	$32^{+0.4}_{+0.1}$	$25^{+0.084}_0$	64	(46)	35	R27.5
	SCS-140-Y	A	JSC3 (large bore size), SCS	140	50	90	$36^{+0.4}_{+0.1}$	$28^{+0.084}_0$	72	(46)	40	R30
M36 x 1.5	SCS-160-Y	A	JSC3 (large bore size), SCS, SSD	160	60	105	$40^{+0.4}_{+0.1}$	$32^{+0.100}_0$	80	(55)	45	R35
M40 x 1.5	SCS-180-Y	A	JSC3 (large bore size), SCS	180	65	115	$50^{+0.4}_{+0.1}$	$40^{+0.100}_0$	100	(60)	50	R42.5
M45 x 1.5	SCS-200-Y	A	SCS	200	75	125	$50^{+0.4}_{+0.1}$	$40^{+0.100}_0$	100	(70)	50	R42.5
M56 x 2	SCS-250-Y	A	SCS	250	88	150	$63^{+0.4}_{+0.1}$	$50^{+0.100}_0$	126	(85)	62	R52.5

Ending